



LIST PRICE

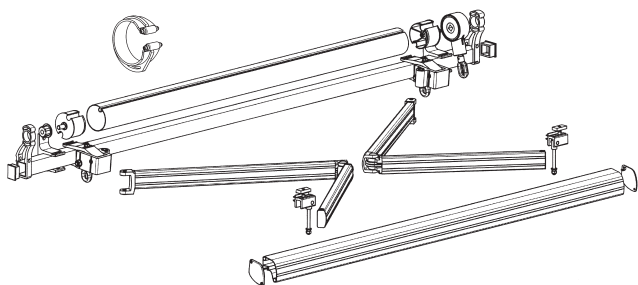
Prices are for frame only, white color*

For authorized dealer discounts, please consult your S&F sales rep

Prices effective June 15, 2005 • This price list replaces any previous price lists

Awning Width	Arm Projection Size						Arms	Brackets	Roller Support	Aluminum Hood	XL Awning	
	3'3"	5'	6'6"	8'2"	9'10"	11'6"					13'1"	Arms
5'	\$975						2	2	No	\$247		
6'	\$1,000	\$1,005					2	2	No	\$262		
7'	\$1,025	\$1,030					2	2	No	\$277		
8'	\$1,050	\$1,055	\$1,075				2	2	No	\$292		
9'	\$1,075	\$1,080	\$1,100				2	2	No	\$307		
10'	\$1,100	\$1,105	\$1,125	\$1,170			2	2	No	\$322		
11'	\$1,130	\$1,135	\$1,155	\$1,200			2	3	No	\$352		
12'	\$1,160	\$1,165	\$1,185	\$1,230	\$1,270		2	3	No	\$367		
13'	\$1,190	\$1,195	\$1,215	\$1,260	\$1,300		2	3	No	\$382		
14'	\$1,220	\$1,225	\$1,245	\$1,290	\$1,330	\$1,440	2	3	No	\$397		
15'	\$1,250	\$1,255	\$1,275	\$1,310	\$1,360	\$1,470	2	3	No	\$412		
16'		\$1,290	\$1,310	\$1,345	\$1,395	\$1,505	2	4	No	\$442	\$2,065	2
17'		\$1,325	\$1,345	\$1,380	\$1,430	\$1,540	2	4	No	\$457	\$2,100	2
18'		\$1,360	\$1,380	\$1,415	\$1,465	\$1,575	2	4	No	\$472	\$2,135	2
19'		\$1,395	\$1,415	\$1,450	\$1,500	\$1,610	2	4	No	\$487	\$2,170	2
20'		\$1,475	\$1,495	\$1,530	\$1,580	\$1,690	2	5	Yes	\$502	\$2,215	2
21'		\$1,775	\$1,820	\$1,880	\$1,780	\$1,895	3/4	5	Yes	\$517	\$2,250	2
22'		\$1,800	\$1,845	\$1,905	\$1,805	\$1,920	3/4	5	Yes	\$532	\$2,285	2
23'		\$1,825	\$1,870	\$1,930	\$1,830	\$1,945	3/4	5	Yes	\$547	\$2,320	2
24'		\$1,855	\$1,900	\$1,960	\$2,030	\$1,975	3/4	6	Yes	\$577	\$2,365	2
25'		\$1,930	\$1,975	\$2,210	\$2,105	\$2,050	3/4	6	Yes	\$592	\$2,705	3
26'		\$1,955	\$2,000	\$2,235	\$2,130	\$2,075	3/4	6	Yes	\$607	\$2,740	3
27'		\$1,980	\$2,025	\$2,085	\$2,155	\$2,100	3/4	6	Yes	\$622	\$2,775	3
28'		\$2,005	\$2,050	\$2,110	\$2,180	\$2,300	4	6	Yes	\$637	\$2,810	3
29'		\$2,035	\$2,080	\$2,140	\$2,210	\$2,330	4	7	Yes	\$667	\$2,855	3
30'		\$2,060	\$2,105	\$2,165	\$2,235	\$2,355	4	7	Yes	\$682	\$3,195	4
31'		\$2,085	\$2,130	\$2,190	\$2,260	\$2,380	4	7	Yes	\$697	\$3,230	4
32'		\$2,110	\$2,155	\$2,215	\$2,285	\$2,405	4	7	Yes	\$712	\$3,265	4
33'		\$2,140	\$2,185	\$2,245	\$2,315	\$2,435	4	8	Yes	\$742	\$3,300	4
34'		\$2,165	\$2,210	\$2,270	\$2,340	\$2,465	4	8	Yes	\$757	\$3,335	4
35'		\$2,190	\$2,235	\$2,295	\$2,365	\$2,495	4	8	Yes	\$772	\$3,370	4
36'		\$2,215	\$2,260	\$2,320	\$2,390	\$2,525	4	8	Yes	\$787	\$3,405	4

Self-pitch control feature is limited to 2 arm awnings. *Colors available upon request: Beige, Brown, Gray & Black



For complete awning with fabric, motor and electronic controls, please contact your S&F sales rep. for pricing and details.



BROOKLYN
110 Emerson Place, Brooklyn, NY 11205
718.399.3333 • Fax: 888.399.3375

FARMINGDALE
43 Engineers Lane, Farmingdale, NY 11735
631.420.4400 • Fax: 888.399.3375



LIST PRICE

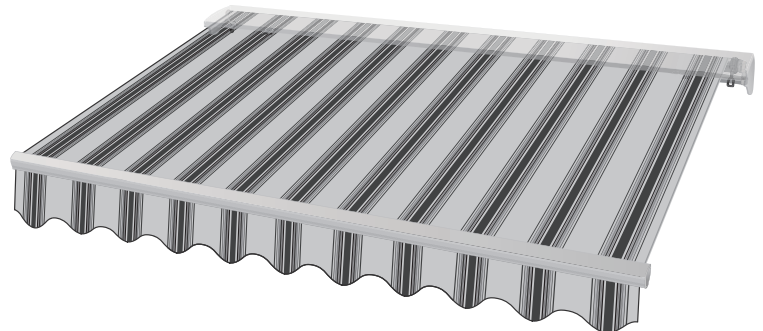
Prices are for complete awning
frame with fabric

For authorized dealer discounts, please consult your S&F sales rep

Prices effective August 1, 2005 • This price list replaces any previous price lists

Awning Width	Arm Projection Size						Arms	Brackets	Roller Support	Aluminum Hood	XL Awning	
	3'3"	5'	6'6"	8'2"	9'10"	11'6"					13'1"	Arms
5'	\$1,135						2	2	No	\$247		
6'	\$1,160	\$1,205					2	2	No	\$262		
7'	\$1,185	\$1,230					2	2	No	\$277		
8'	\$1,290	\$1,335	\$1,435				2	2	No	\$292		
9'	\$1,315	\$1,360	\$1,460				2	2	No	\$307		
10'	\$1,340	\$1,385	\$1,485	\$1,570			2	2	No	\$322		
11'	\$1,370	\$1,415	\$1,515	\$1,600			2	3	No	\$352		
12'	\$1,480	\$1,565	\$1,665	\$1,790	\$1,910		2	3	No	\$367		
13'	\$1,510	\$1,595	\$1,695	\$1,820	\$1,940		2	3	No	\$382		
14'	\$1,540	\$1,625	\$1,725	\$1,850	\$1,970	\$2,160	2	3	No	\$397		
15'	\$1,570	\$1,655	\$1,755	\$1,870	\$2,000	\$2,190	2	3	No	\$412		
16'		\$1,770	\$1,910	\$2,025	\$2,195	\$2,425	2	4	No	\$442	\$3,065	2
17'		\$1,805	\$1,945	\$2,060	\$2,230	\$2,460	2	4	No	\$457	\$3,100	2
18'		\$1,840	\$1,980	\$2,095	\$2,265	\$2,495	2	4	No	\$472	\$3,135	2
19'		\$1,955	\$2,135	\$2,250	\$2,460	\$2,690	2	4	No	\$487	\$3,370	2
20'		\$2,035	\$2,215	\$2,330	\$2,540	\$2,770	2	5	Yes	\$502	\$3,415	2
21'		\$2,335	\$2,540	\$2,680	\$2,740	\$2,975	3/4	5	Yes	\$517	\$3,450	2
22'		\$2,360	\$2,565	\$2,705	\$2,765	\$3,000	3/4	5	Yes	\$532	\$3,485	2
23'		\$2,505	\$2,710	\$2,890	\$2,950	\$3,225	3/4	5	Yes	\$547	\$3,720	2
24'		\$2,535	\$2,740	\$2,920	\$3,150	\$3,255	3/4	6	Yes	\$577	\$3,765	2
25'		\$2,610	\$2,815	\$3,170	\$3,225	\$3,330	3/4	6	Yes	\$592	\$4,105	3
26'		\$2,635	\$2,840	\$3,195	\$3,250	\$3,355	3/4	6	Yes	\$607	\$4,140	3
27'		\$2,740	\$2,985	\$3,165	\$3,435	\$3,540	3/4	6	Yes	\$622	\$4,375	3
28'		\$2,765	\$3,010	\$3,190	\$3,460	\$3,740	4	6	Yes	\$637	\$4,410	3
29'		\$2,795	\$3,040	\$3,220	\$3,490	\$3,770	4	7	Yes	\$667	\$4,455	3
30'		\$2,820	\$3,065	\$3,245	\$3,515	\$3,795	4	7	Yes	\$682	\$4,795	4
31'		\$2,925	\$3,210	\$3,390	\$3,700	\$4,020	4	7	Yes	\$697	\$5,030	4
32'		\$2,950	\$3,235	\$3,415	\$3,725	\$4,045	4	7	Yes	\$712	\$5,065	4
33'		\$2,980	\$3,265	\$3,445	\$3,755	\$4,075	4	8	Yes	\$742	\$5,100	4
34'		\$3,125	\$3,410	\$3,630	\$3,940	\$4,265	4	8	Yes	\$757	\$5,335	4
35'		\$3,150	\$3,435	\$3,655	\$3,965	\$4,295	4	8	Yes	\$772	\$5,370	4
36'		\$3,175	\$3,460	\$3,680	\$3,990	\$4,325	4	8	Yes	\$787	\$5,405	4

Self-pitch control feature is limited to 2 arm awnings.



BROOKLYN
110 Emerson Place, Brooklyn, NY 11205
718.399.3333 • Fax: 888.399.3375

FARMINGDALE
43 Engineers Lane, Farmingdale, NY 11735
631.420.4400 • Fax: 888.399.3375